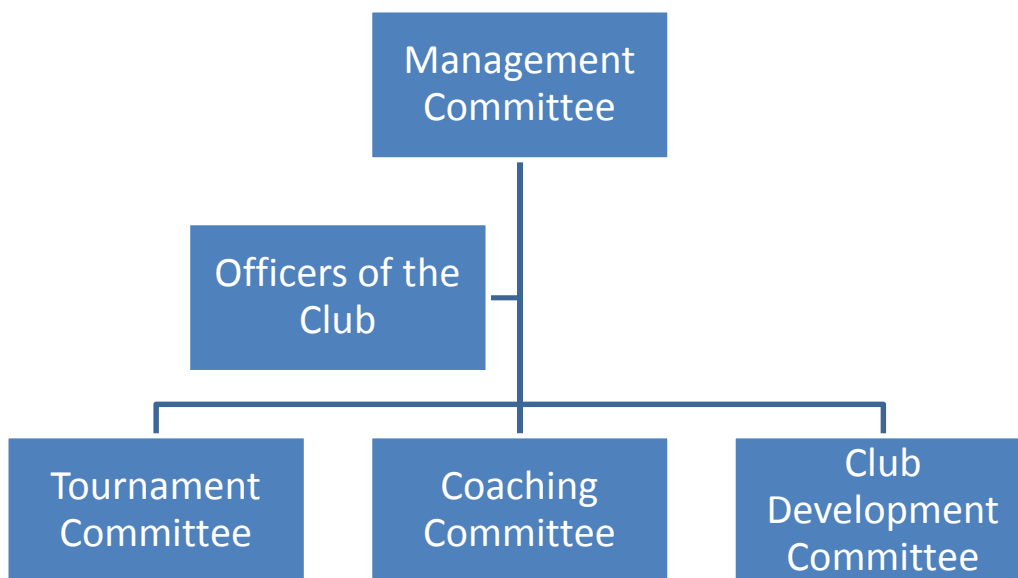




Club Structure:



Management Committee is formed of elected members, elected at the AGM.

Chair.	Darran Leete
Treasurer.	Mel Willers
Coaching Officer.	Alex Green
Development Officer.	Chris Turner
President.	Peter May
Press and Publicity Officer.	Sarah Potter
Secretary.	Matt Weavers
Social Events Organiser.	Cathy Steeples
Volunteer Coordinator	Matt Weavers



Officers of the Club are appointed by the Management Committee.

Child Welfare Officer - reports to Management Committee

[Helen O'Neill](#)

Health and Safety Officer - reports to Management Committee

[Alex Mercer](#)

Young Persons Coordinator - reports to Management Committee

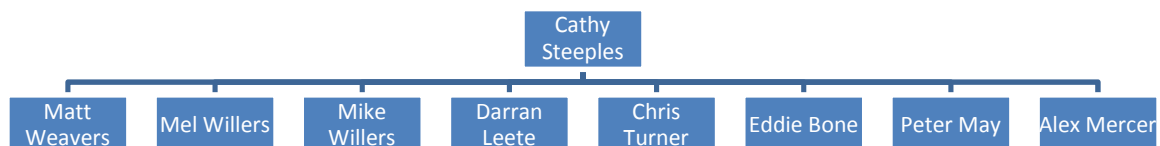
[Alex Mercer](#)

Tournament Organiser - reports to Management Committee

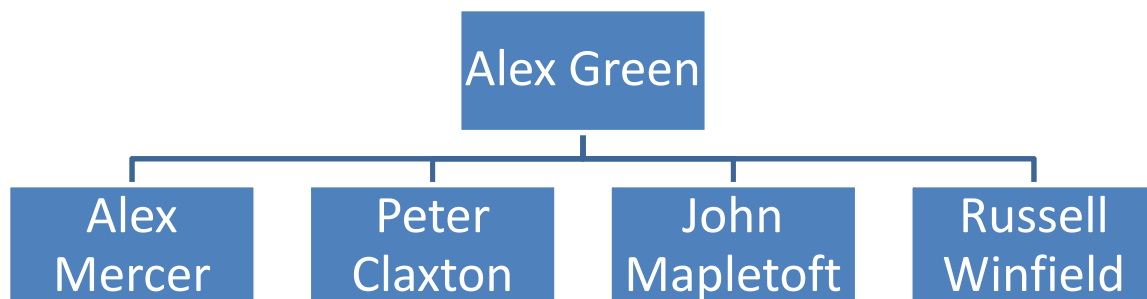
[Cathy Steeples](#)

The below committees are appointed by the relevant Officer/Organiser

[Tournament Committee - Appointed and headed by the Tournament Organiser](#)

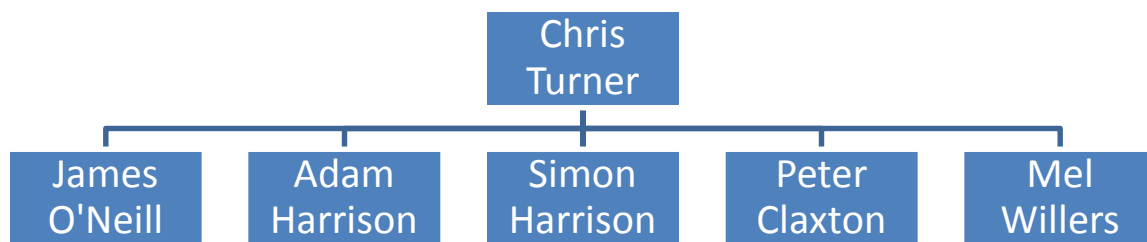


[Coaching Committee - Appointed and headed by the Coaching Officer.](#)





Club Development Committee - Appointed and headed by the Club Development Officer.



(All the above Committees report directly to the Management Committee - via the relevant Officer/Organiser).